

**WIRELESS ROOM THERMOSTAT
T2WB**

The wireless room thermostat is a smart device for the temperature control of a room; it guarantees environmental comfort and energy saving at the same time.

The wireless thermostat **T2WB** has a modern design. These wireless units have many features to control room conditions managing a set of specific parameters.

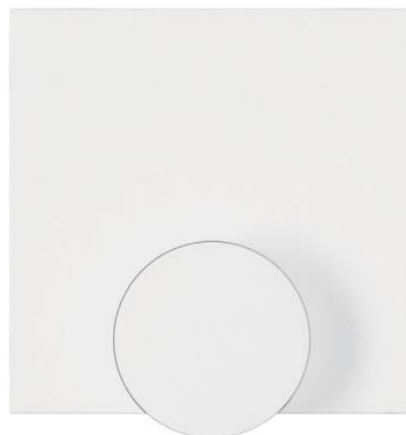
Sensor precision allows to create a monitoring system per room, in order to ensure the maximum user comfort.

The wireless room thermostat **T2WB**, powered by batteries, is equipped with a radio antenna which sends to the control unit (different models are available among **U2W4 / U2W4E / U2W2 / U2W2E**) operation data, the measured temperature and the target temperature.

All components of this device are safe and at the forefront; the operative radio frequency is 868 MHz which gives a high range and reduces interferences.

This temperature management system has an elevated flexibility, especially for new building construction and building renovation. Installation is easy because no wiring is needed.

With the wireless room thermostat **T2WB** 868 MHz the user can achieve the optimal comfort by single room temperature adjustment along with a suitable energy savings.


TECHNICAL FEATURES
Wireless room thermostat T2WB

- Wireless communication between control unit **U2W4 / U2W4E / U2W2 / U2W2E** and room thermostat **T2WB**
- Technology 868 MHz
- Limitation of the setting temperature range
- Precise response of sensors
- Functional design
- Wireless
- Easy installation

Whole wireless system

- Receiver and emitter work at the frequency of 868 MHz
- Protection function in case of failure of the wireless room thermostat **T2WB** or low battery (function "antifreeze")
- Automatic start of function "first opening" of actuators afterwards the first system activation
- Display error in case of radio signal loss, low battery or bad reception
- Radio transmission test between the antenna and the receiver in order to make installation and configuration easier

USE

- Individual control system of the room temperature; perfect for floor heating and cooling and fan coil units.

- High heating system flexibility, especially for new or rebuilt buildings. No wiring makes the installation immediate.
- It can manage both the heating and the cooling. It allows the optimal control of the temperature in each room which is installed; this device is ideal for radiant surfaces where a minimum temperature is request (for example in bathrooms)

GENERAL INFORMATION
Name

T2WB

Box content

1 x Wireless room thermostat **T2WB**

2 x batteries AAA, 1.5V

1 x handbook

Other kind of wireless room thermostat

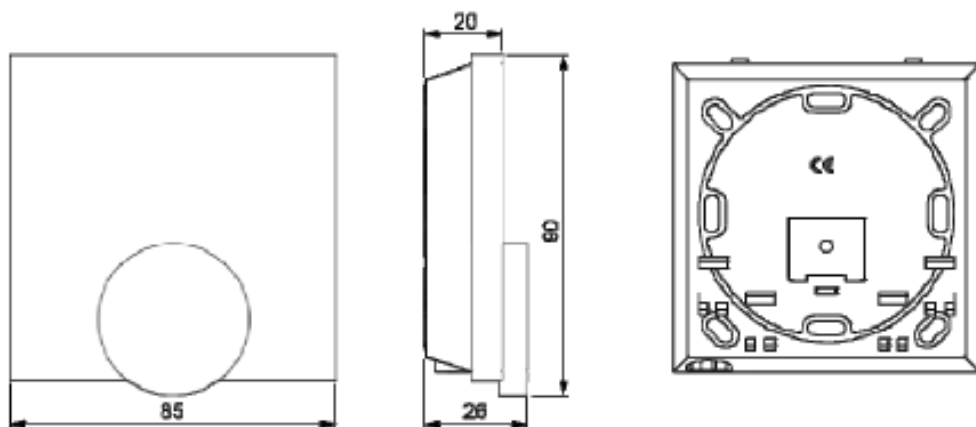
- T2WBD – Wireless room thermostat with display

FUNCTIONS


The wireless room thermostat **T2WB** 868 MHz enables individual temperature room control. It has a battery radio emitter which sends operation data, measured temperature and set-point temperature to the control unit **U2W4/U2W4E U2W2/U2W2E**.

Thermostat default codes ensure the exclusive communication with the control unit radio channel **U2W4/U2W4E U2W2/U2W2E**.

DIMENSIONS



TECHNICAL DATA

Type	T2WB	CERTIFICATION
Target temperature setting range	10°C– 28°C	 EN 60730/1
Battery type	2x LR03/AAA Micro 1,5V	
Battery life	> 4 year	
Degree of protection	IP20 / III	
Range	25 m (inside buildings)	EN60730-2-9
Admissible ambient temperature	0°C à 50°C	
Storage/transport temperature	-10°C à +50°C	
Admissible ambient temperature	Max. 80% ¹	
Dimension (mm)	86/86/26	
Weight	90 g	
Radio technology	868 MHz SRD band	
Target temperature resolution	0,25 K	
Range of measurable temperature	0°-40°C	
Measurement precision int. NTC	± 0,3 k	
<i>1 - non condensing</i>		

TEST RADIO

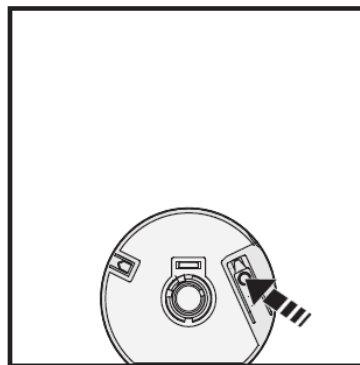
1. A long press of the rotary knob activates the radio test.
2. The LED of the connected heating zone is toggled for 1 minute, thus switched on or off depending on its current operating state.

COMMISSIONING (incl. pairing)

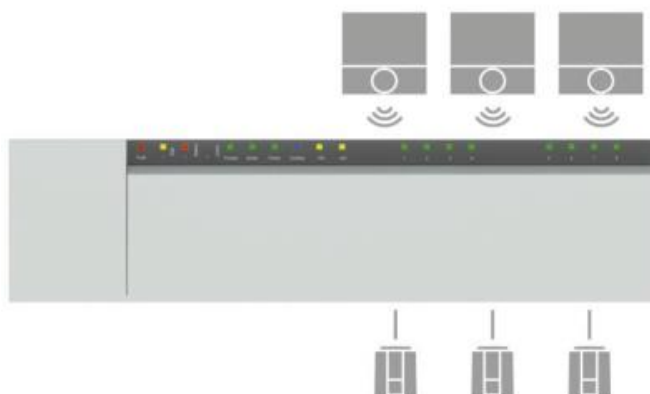
1. Take the rotary knob off.
2. Be sure that no other control unit are in pairing mode.
3. Activate the pairing function at the base station for the desired heating zone (see the control unit manual).
4. In order to activate the pairing function on the room thermostat, press the rotary knob for >1 sec.

The control unit and the room control thermostat are connected to each other.

Each room thermostat can drive several zones.

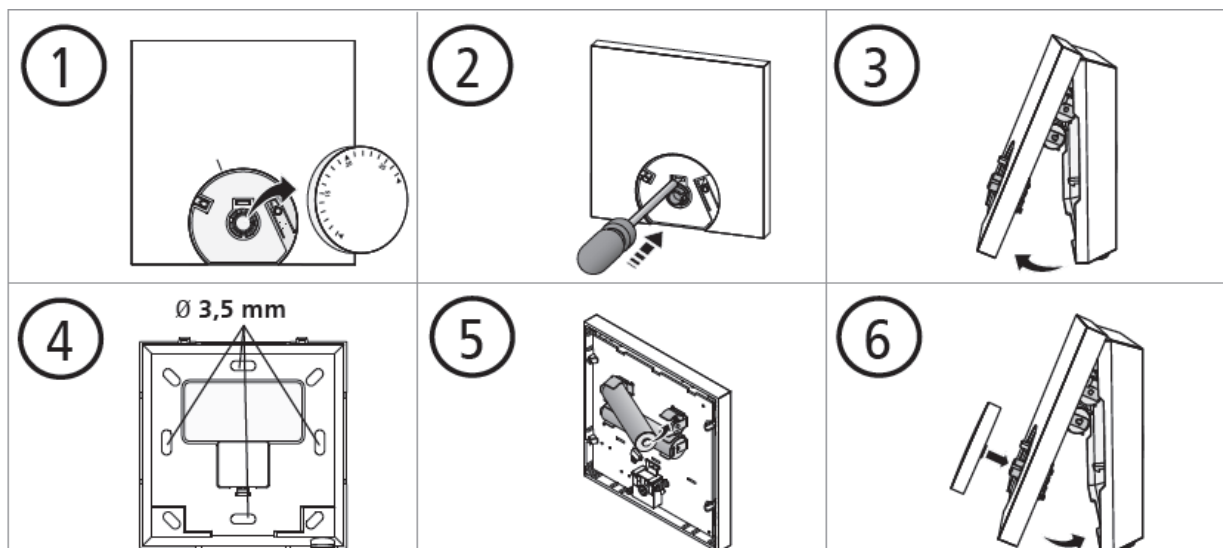
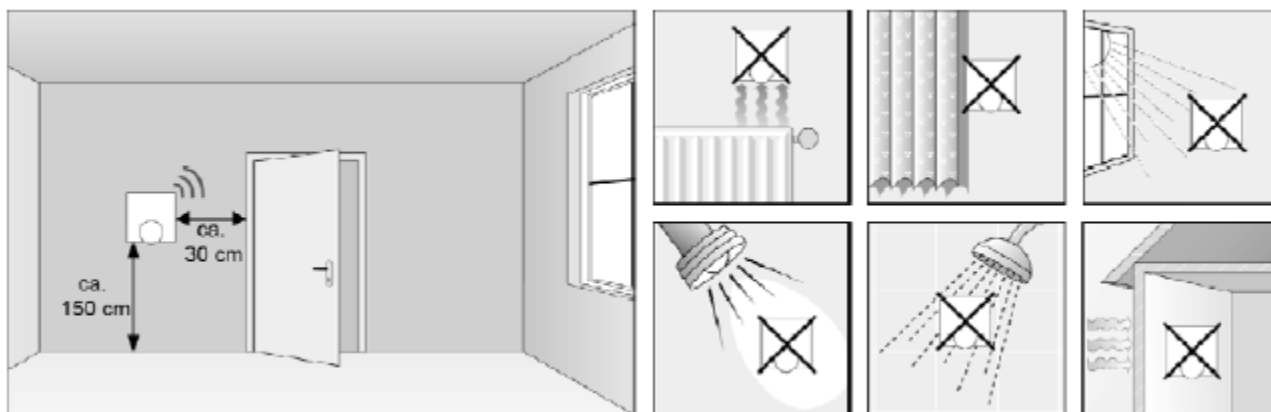


OPERATION EXAMPLE



RECOMMENDED INSTALLATION PLACE

In order to ensure optimal operative conditions and clear temperature control, the wireless room thermostat **T2WB** must be installed far from any perturbation source, like humidity, direct exposition to the solar radiation or other heat source.



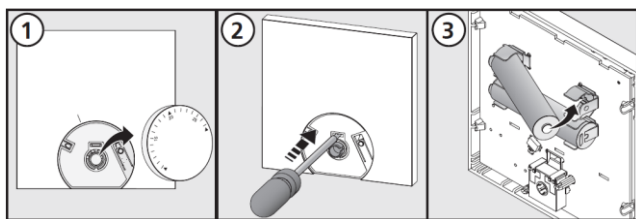
ADDITIONAL INFORMATION

Installing Batteries

Imperatively respect the polarity (+ and -). A wrong battery input can damage the device. Do not handle batteries without gloves: bare-handed handling can reduce battery range.

Changing batteries

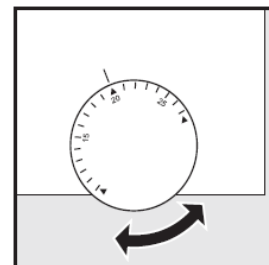
Do not throw low batteries away! Change batteries with 2 x LR03/AAA Micro 1,5V. Do not use any other kind of batteries. Dispose of low batteries in accordance to the environmental local regulation.



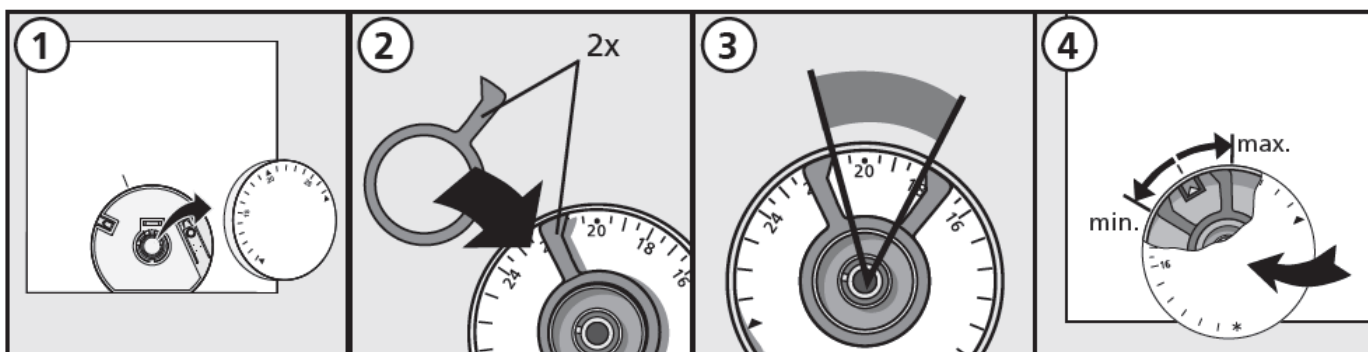
Once batteries are changed, activate the room thermostat by pressing the pairing button.

Use

The rotary knob has a graduated scale to set the room temperature. The target temperature selection is done by rotating the handle. The scale is in Celsius degrees [°C].



Limiting the adjustable temperature range (optional)



Adjusting the target temperature

